



TURKISH AIRLINES

# DCRC GUIDELINE

April 2026

Version 3.0

Valid from: 1 May 2026



TURKISH AIRLINES



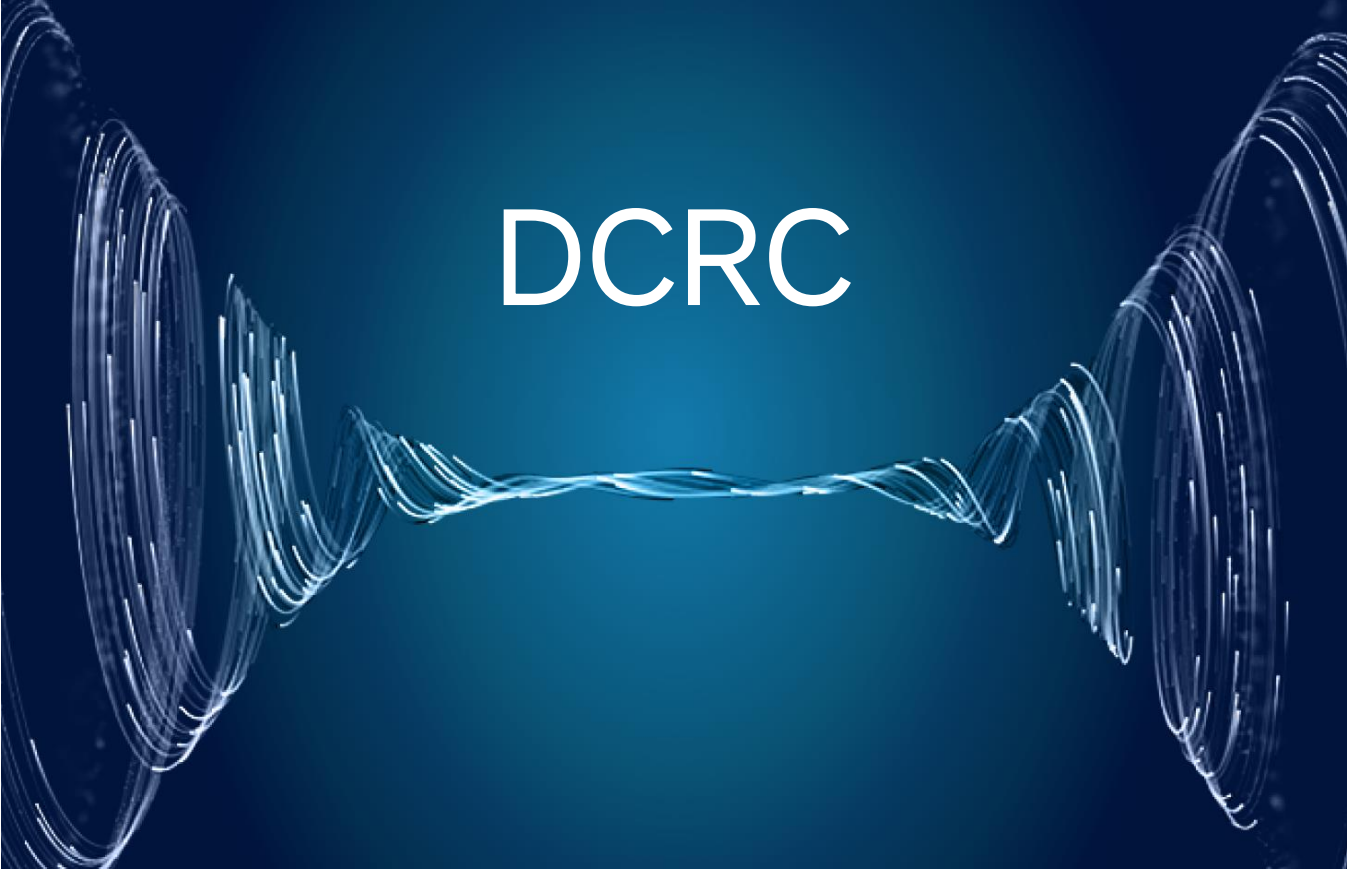
# Contents

<b>1. INTRODUCTION</b> .....	3
<b>2. DEFINITIONS</b> .....	4
<b>3. RULES AND COLLECTION</b> .....	5
<b>4. REFUND</b> .....	7
<b>5. EXEMPTIONS</b> .....	8





## 1. INTRODUCTION



Turkish Airlines, by 1st October 2024, has started to implement a Distribution Cost Recovery Charge (DCRC) on tickets sold via GDSs. DCRC will be applied to all GDS EDIFACT bookings.

None of the GDSs will be exempt from DCRC.

Tickets issued through TKCONNECT or Turkish Airlines' direct channels (Troya, Quickres, Websagent, Easyticket, TK Holidays, call center, website and mobile) are not subject to DCRC.



---

## 2. DEFINITIONS

### EDIFACT

Electronic Data Interchange for Administration, Commerce and Transport (EDIFACT) is a legacy standard for electronic communication and the exchange of structured data concerning airline bookings, flight schedules, ticketing, passenger information, and other administrative and operational tasks.

It facilitates data exchange among airlines, travel agents, and other industry stakeholders, but it has now reached its limitations.

### NDC

New Distribution Capability (NDC) is a modern data exchange format that leverages Offer and Order management processes, allowing airlines to create and share relevant offers with customers, regardless of the distribution channel.

NDC opens up new possibilities in distribution by enabling more comprehensive and personalized offers. It enhances the efficiency and flexibility of distribution channels, allowing airlines to better meet customer needs and preferences.

### DCRC

Distribution Cost Recovery Charge (DCRC) is a surcharge that is added to the total cost of the bookings made through legacy EDIFACT channel via GDSs.



### 3. RULES AND COLLECTION

DCRC is added on the tickets issued through the traditional EDIFACT channel via GDSs. Turkish Airlines has ongoing distribution agreements with the GDSs listed below:

<b>1A</b>	<b>Amadeus</b>
<b>1S/1B</b>	<b>Sabre</b>
<b>1G/1P/1V</b>	<b>Travelport (Galileo/Worldspan/Apollo)</b>
<b>1T</b>	<b>Hitit</b>
<b>1E</b>	<b>Travelsky</b>
<b>1F</b>	<b>Infini</b>
<b>1H</b>	<b>Sirena</b>

- Effective May 1, 2026, DCRC shall be applied as USD 30 per ticket for all GDSs (converted into local currency).

•USD 30            •EUR 25,5            •JPY 4800

- There will be no market-specific differentiation for the DCRC amount.

- DCRC will be applied to all tickets issued worldwide (see [chapter 5](#) for countries with exemption from DCRC) issued via GDSs.



- DCRC will be priced automatically and will be applicable to original tickets (first issue) only. On reissue transactions, DCRC will not be collected.
- DCRC will not be applied to EMDs or any other documents.
- DCRC will be applied to all RBDs.
- DCRC will be collected through YQ and will be reflected to the total ticket price.
- The DCRC fee might change in future periods.
- ADM will be issued if there are any missing DCRC payments.

### **Group bookings:**

Group bookings are not subject to DCRC. (excluding agencies in Türkiye)

### **Refundability:**

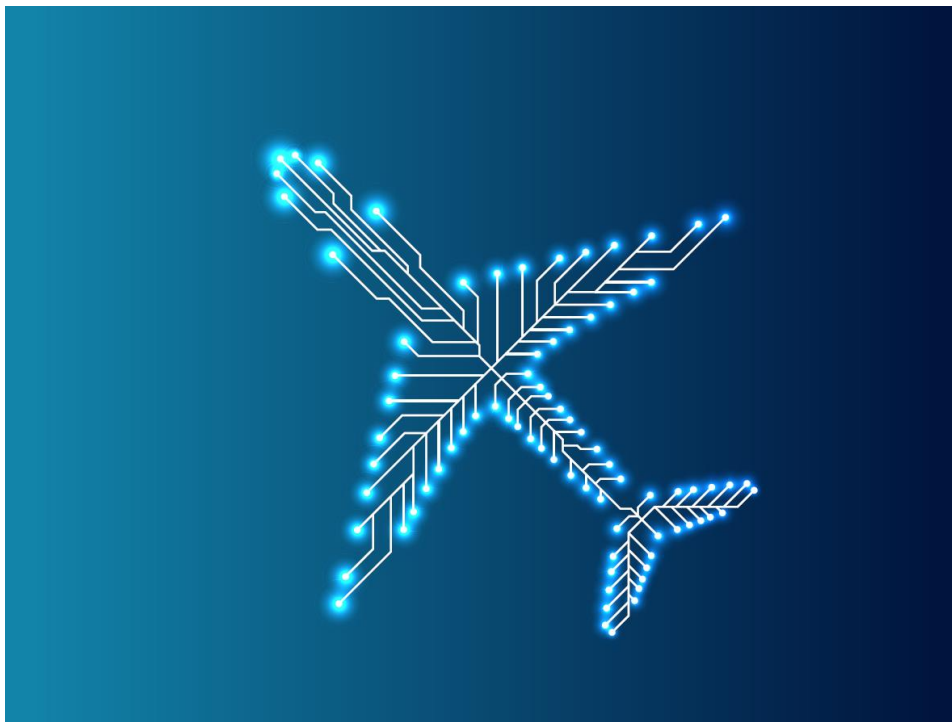
Refund of DsCRC is only possible for involuntary transactions.





## 4. REFUND

- DCRC is non-refundable unless the ticket is fully unused and refunded involuntarily or there is a legal requirement of the refund of DCRC.
- There will be no DCRC refunds for voluntary refunds.
- DCRC is non-refundable for used/partially used tickets even if the refund is involuntary.
- Refunds shall be processed to the initial payment method.
- When automated/semi-automated refund tools are used, DCRC YQ tax should be removed **manually** from the refund mask.
- Inaccurate refunds of DCRC (e. g. voluntary refunds, involuntary refunds of partially-used tickets) are subject to ADM.





## 5. EXEMPTIONS

### Country specific exceptions:

All tickets with following points of origin (point of commencement) are exempt from DCRC:

- China
- Hong Kong
- Iran
- Libya
- New Zealand
- Yemen
- The Philippines
- Mali

### Passenger type specific exceptions:

- There will be no DCRC on INF (infant) passenger type worldwide.
- There will be no DCRC on group bookings. (except for agencies based in Türkiye)

**Note:** *Agencies which have been exempt from DCRC until now (selected TMCs and cruise agencies) will be subject to a reduced DCRC amount of USD 10 (EUR 8,50 / JPY 1600) per ticket starting May 1, 2026.*

**Note:** *On reissue transactions after May 1, 2026, previously unpaid DCRC amount will be collected.*



**TURKISH  
AIRLINES**

# DCRC GUIDELINE



**TURKISH AIRLINES**